



# Bray®

## SERIES 4

1" - 16" (25mm - 400mm)

Torque Output: 1,100 - 8,800 lb-in.

# GEAR OPERATOR

304 STAINLESS STEEL

Bray Controls is proud to introduce the Series 4 quarter-turn stainless steel gear operator for manual control of valve position. The weatherproof stainless steel housing is ideal for applications in highly corrosive environments as well as in breweries, pharmaceutical and sanitary industries.

### FEATURES

For on-off and throttling service of 1" - 16" (25mm - 400mm) butterfly valves. Torque range is 1,100 to

8,800 lb-in. The self-locking worm and worm gear drive holds the valve in the desired position. Features include an aluminum or stainless steel handwheel, a valve position indicator and mechanical travel stops that permit field adjustment of valve movement to specific degrees of rotation. Offered with a double "D" connection for 1" - 12" valves and keyway for 14" and 16" valves. Additionally, the Series 4 mounts directly to Bray valves, no brackets or adapters are required.

CELEBRATING  
**20**  
YEARS

**TH** The  
High  
Performance  
Company

## PERFORMANCE SPECIFICATIONS

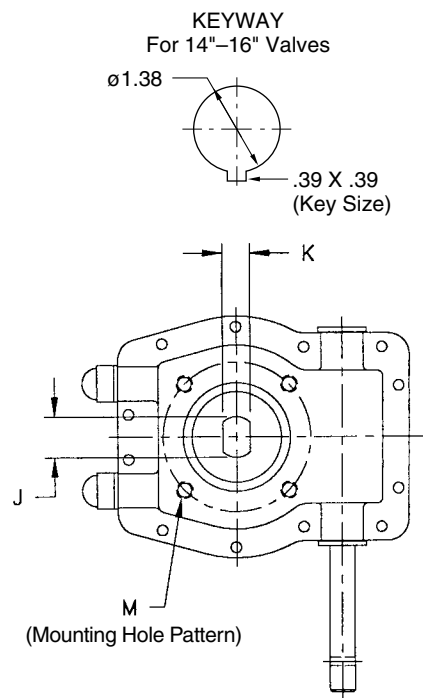
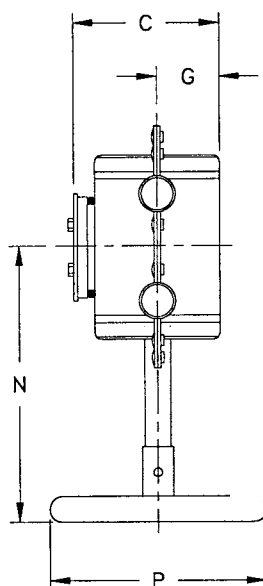
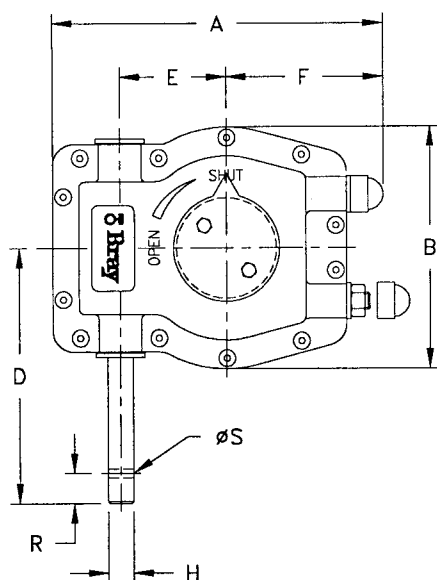
- Enclosure: Weatherproof (IP65)
- Temperature Range: -4°F (-20°C) to 250°F (120°C)
- Stainless steel housing
- Stainless steel input shaft
- Rugged, light-weight construction
- Patented, pressed-metal technology

## MATERIALS OF CONSTRUCTION

Body:	304 Stainless Steel	Worm:	Carbon Steel
Travel Stop:	304 Stainless Steel	Gear Segment:	
Position Indicator:	304 Stainless Steel	Size 0100:	Aluminum Bronze
Body Rivets:	Stainless Steel	Size 0200-0300:	Ductile Iron, nickel plated
Body Seal:	Polyurethane		
Stem:	303 Stainless Steel		
Bushing:	Nylon		
Handwheel:	Aluminum or Stainless Steel		

## TORQUE DATA

Unit		Valve Size		Torque lb-ins (Nm)		M.A. ± 10%
Size	Ratio	in	mm	Output	Input	
0100	40:1	1 - 1½	25 - 40	1100 (125)	92 (11)	12.0
0200	37:1	2 - 6	50 - 150	2200 (250)	184 (21)	12.0
0300	40:1	8 - 16	200 - 400	8800 (1000)	632 (71)	14.0



## DIMENSIONS SERIES 4 Stainless Steel Gear Operator

Unit Size	Valve Size - ins.	A	B	C	D	E	F	G	H	J	K	Mounting Hole Pattern			N	P	R	S	Weight (lb.)
												BC	No. Holes	Threads					
0100	1 - 1½	4.19	3.62	1.57	4.49	1.67	1.44	.67	.47	.39	.31	1.97	4	M6	5.12	4.00	.55	.16	1.8
0200	2 - 6	6.10	4.45	2.67	4.69	1.97	2.80	1.14	.47	.75	.51	2.76	4	M8	6.58	6.00	.55	.16	2.9
0300	8 - 16	9.29	7.40	3.43	6.57	3.15	4.02	1.57	.79	1.18	.87	4.92	4	M12	9.02	14.00	.94	.24	15.4



DISTRIBUTOR

All statements, technical information, and recommendations in this bulletin are for general use only. Consult Bray representatives or factory for the specific requirements and material selection for your intended application. The right to change or modify product design or product without prior notice is reserved.

Patented and patents applied for in U.S. and foreign countries. Bray® is a registered trademark of BRAY INTERNATIONAL, Inc.

# Bray® CONTROLS

A Division of BRAY INTERNATIONAL, Inc.  
13333 Westland East Blvd. Houston, Texas 77041  
281.894.5454 FAX 281.894.9499 www.bray.com